

  
THE MEADOWS  
AT GLACIER HILLS



## THE MEADOWS APARTMENT HOMES

The 64 apartments within The Meadows are located in a Georgian-style, three-story brick structure with underground and surface parking. The sense of community is enhanced by public and private dining rooms, a cafe and a variety of activity and gathering rooms. Apartments are available in seven different floor plans. Residents can choose from units with one or two bedrooms, some with a study.



### FEATURES

Full-size kitchen with dishwasher, stove, refrigerator, and built-in microwave

Laundry area with washer and dryer

Reserved parking in heated underground garage with surface parking for guests

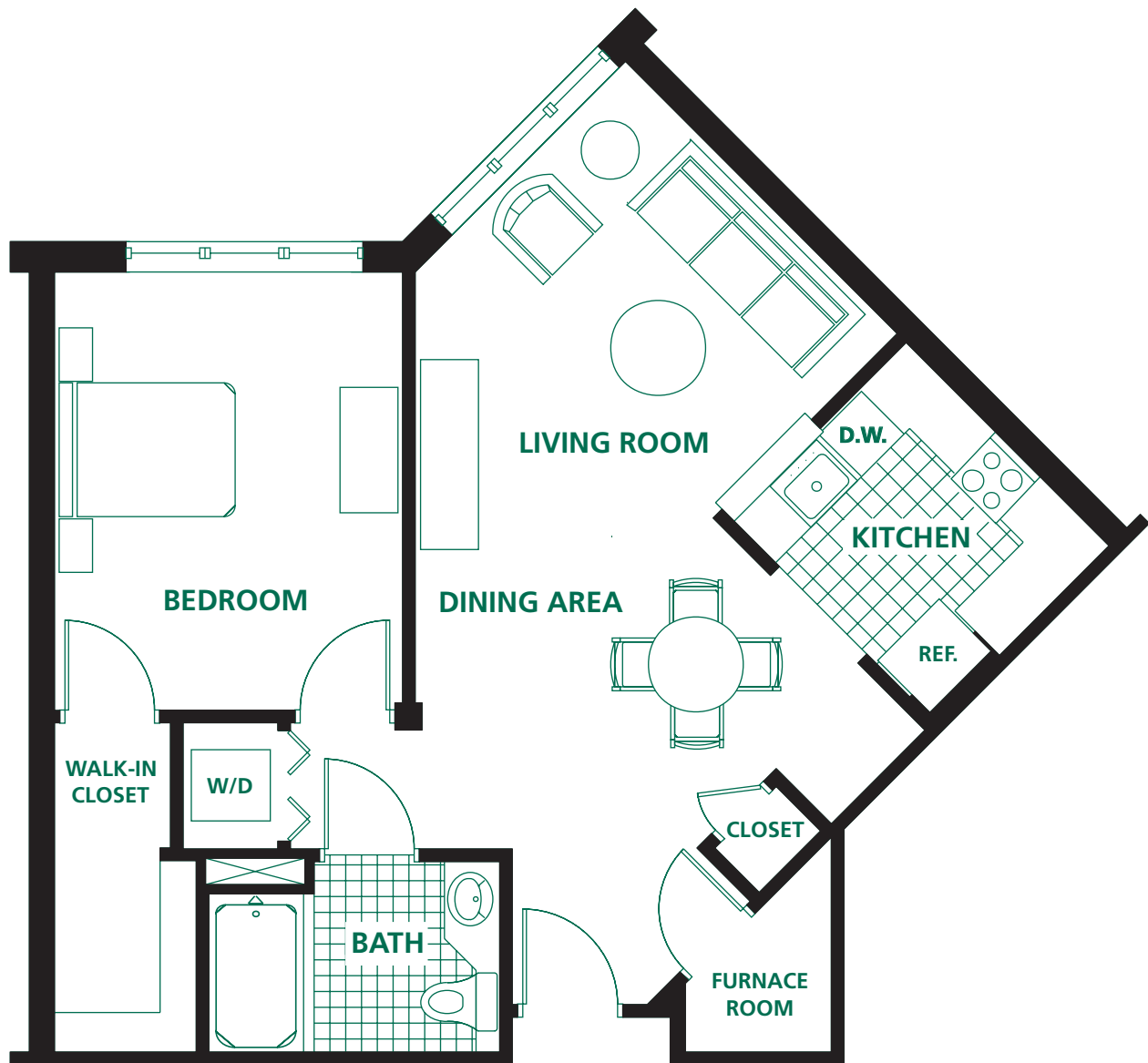
Wall-to-wall carpeting and floor covering

Air conditioning

Storage lockers



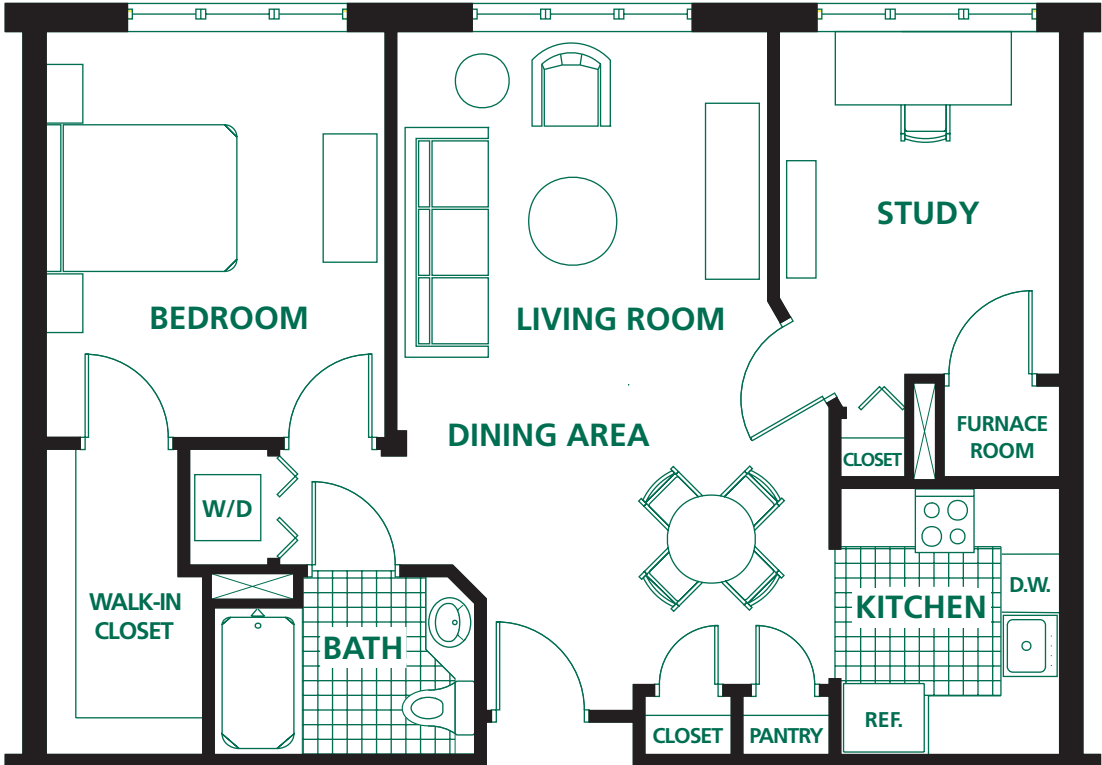
**THE MEADOWS** APARTMENT HOMES



**The BirchWood**

UNIT A  
One Bedroom  
One Bath

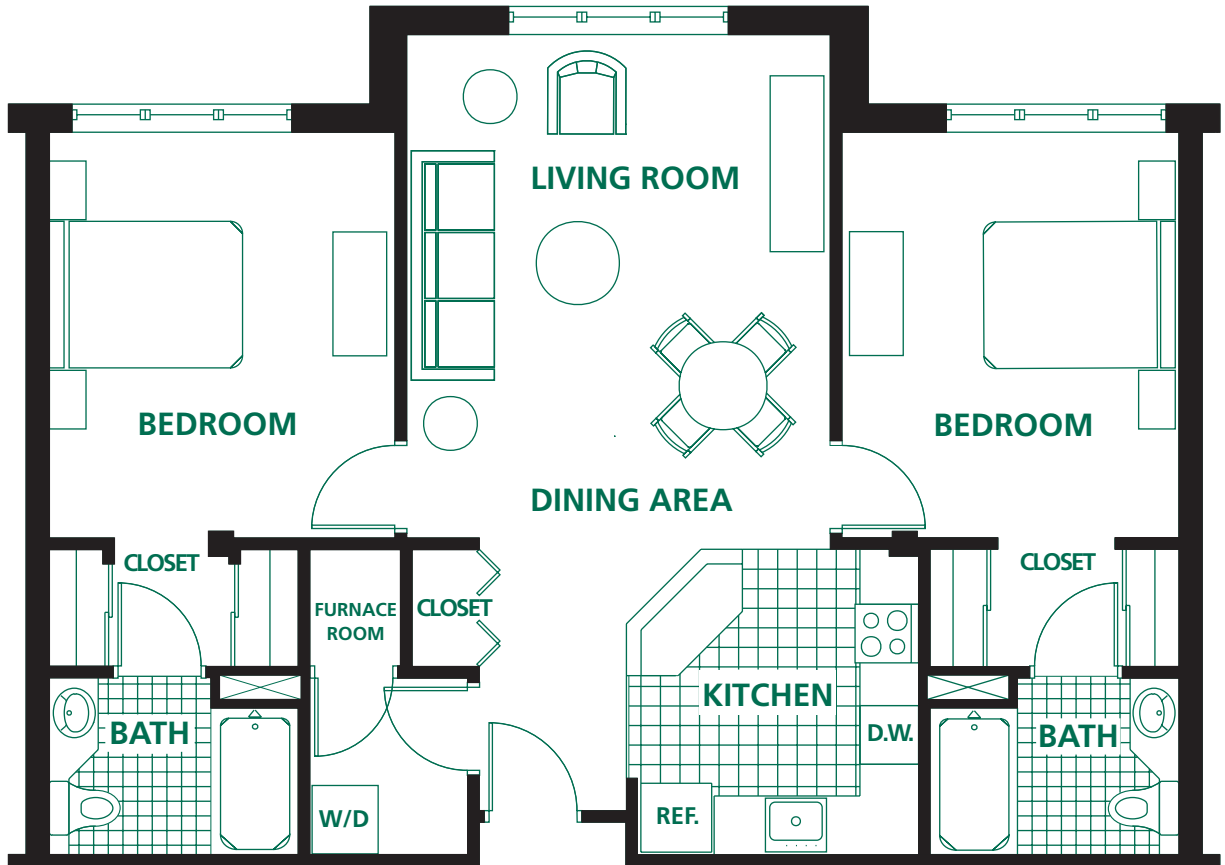
**THE MEADOWS** APARTMENT HOMES



# The SageWood

UNIT B  
One Bedroom  
One Bath  
Study

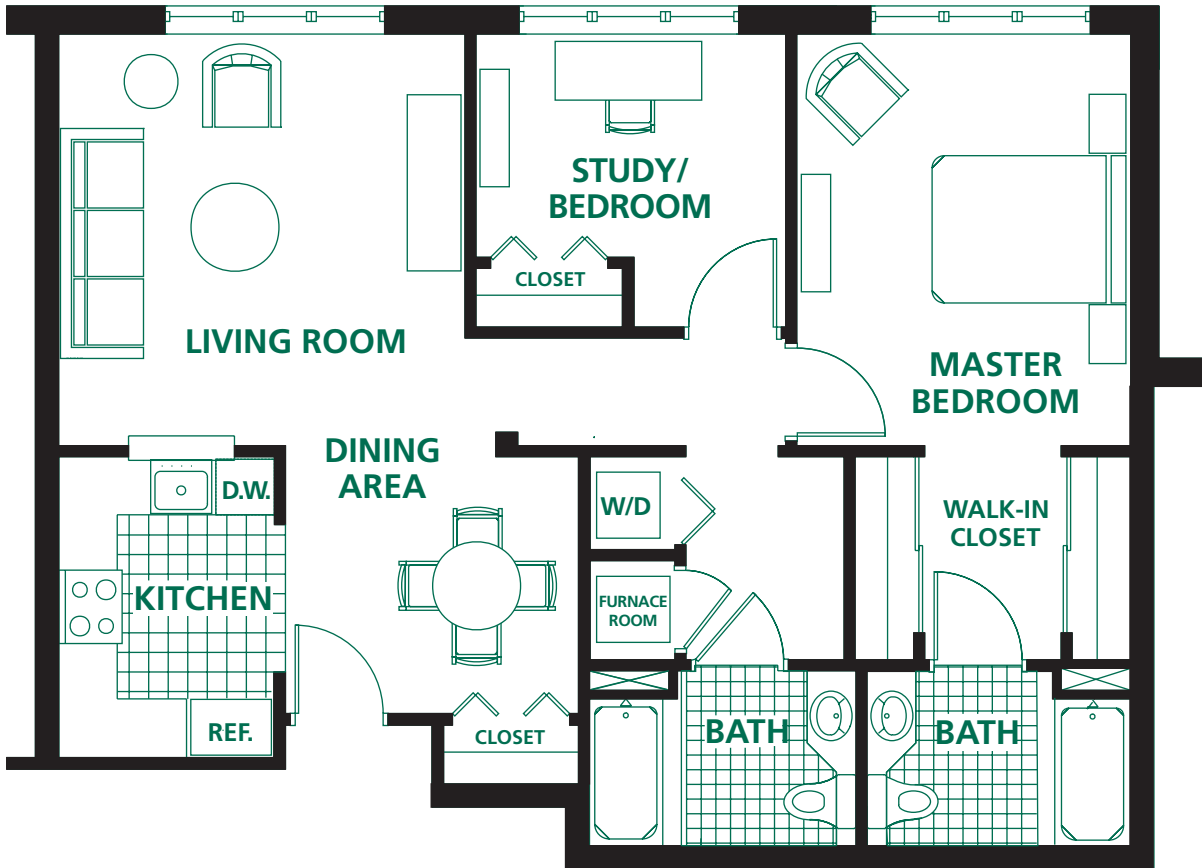
**THE MEADOWS** APARTMENT HOMES



**The LindenWood**

**UNIT C**  
Two Bedrooms  
Two Baths

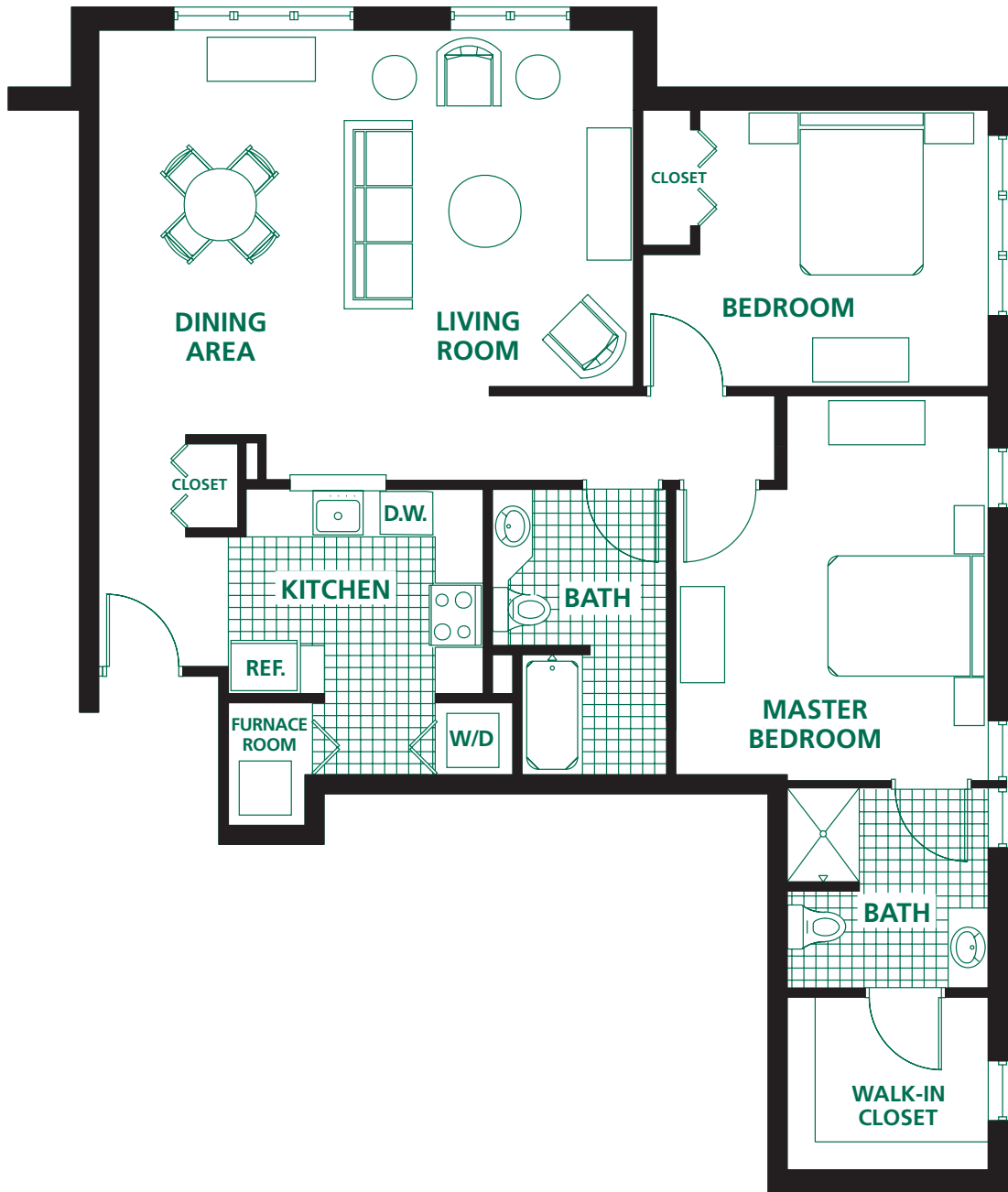
**THE MEADOWS** APARTMENT HOMES



**The CopperWood**

**UNIT D**  
One Bedroom  
Two Baths  
Study

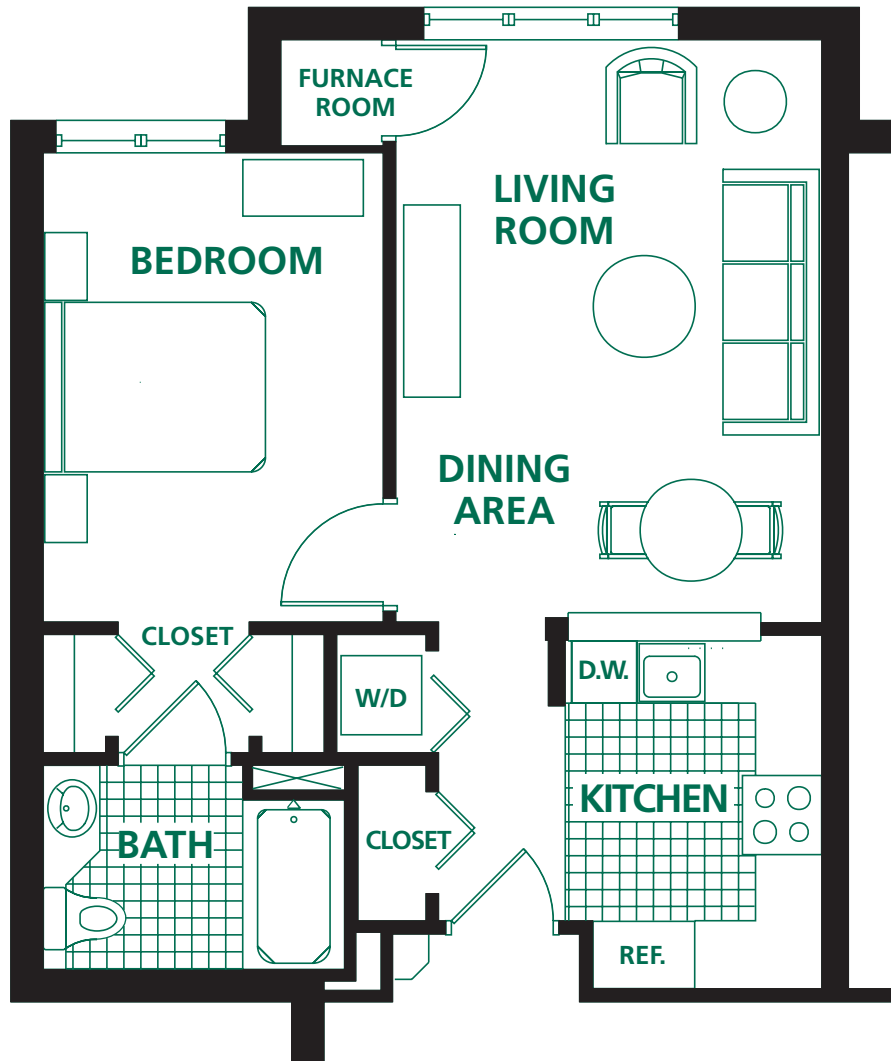
# THE MEADOWS APARTMENT HOMES



## The SpruceWood

UNIT E  
Two Bedroom  
Two Baths

**THE MEADOWS** APARTMENT HOMES

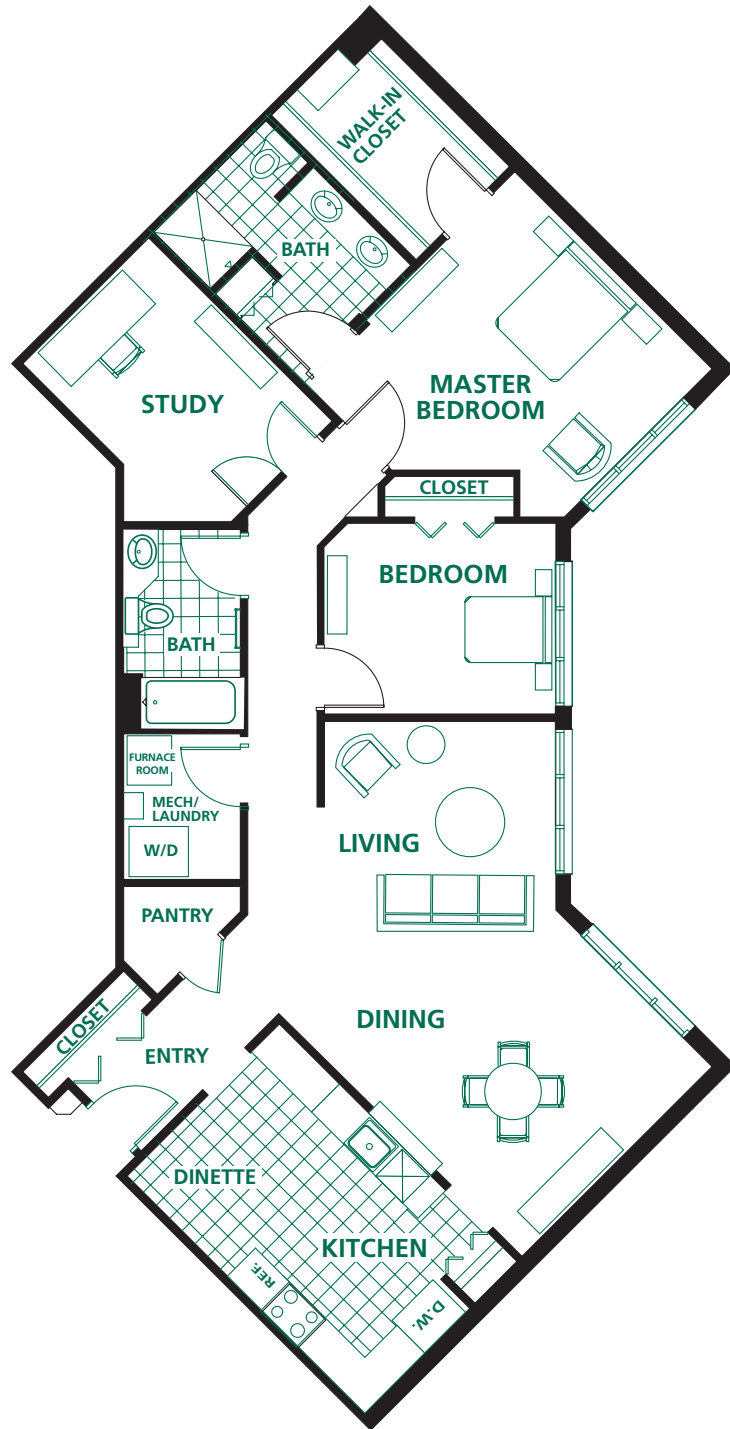


**The RedWood**

UNIT F  
One Bedroom  
One Bath

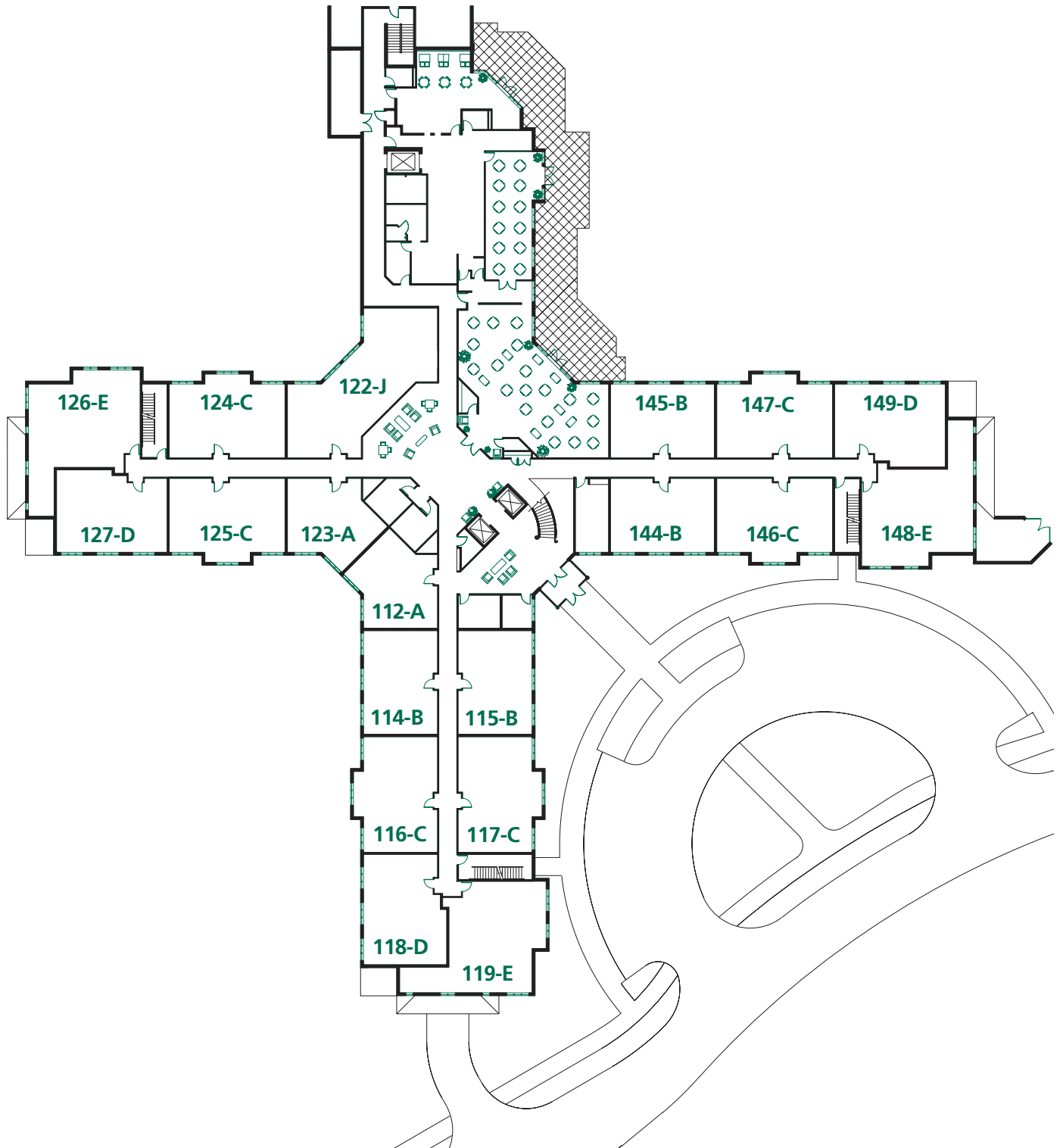


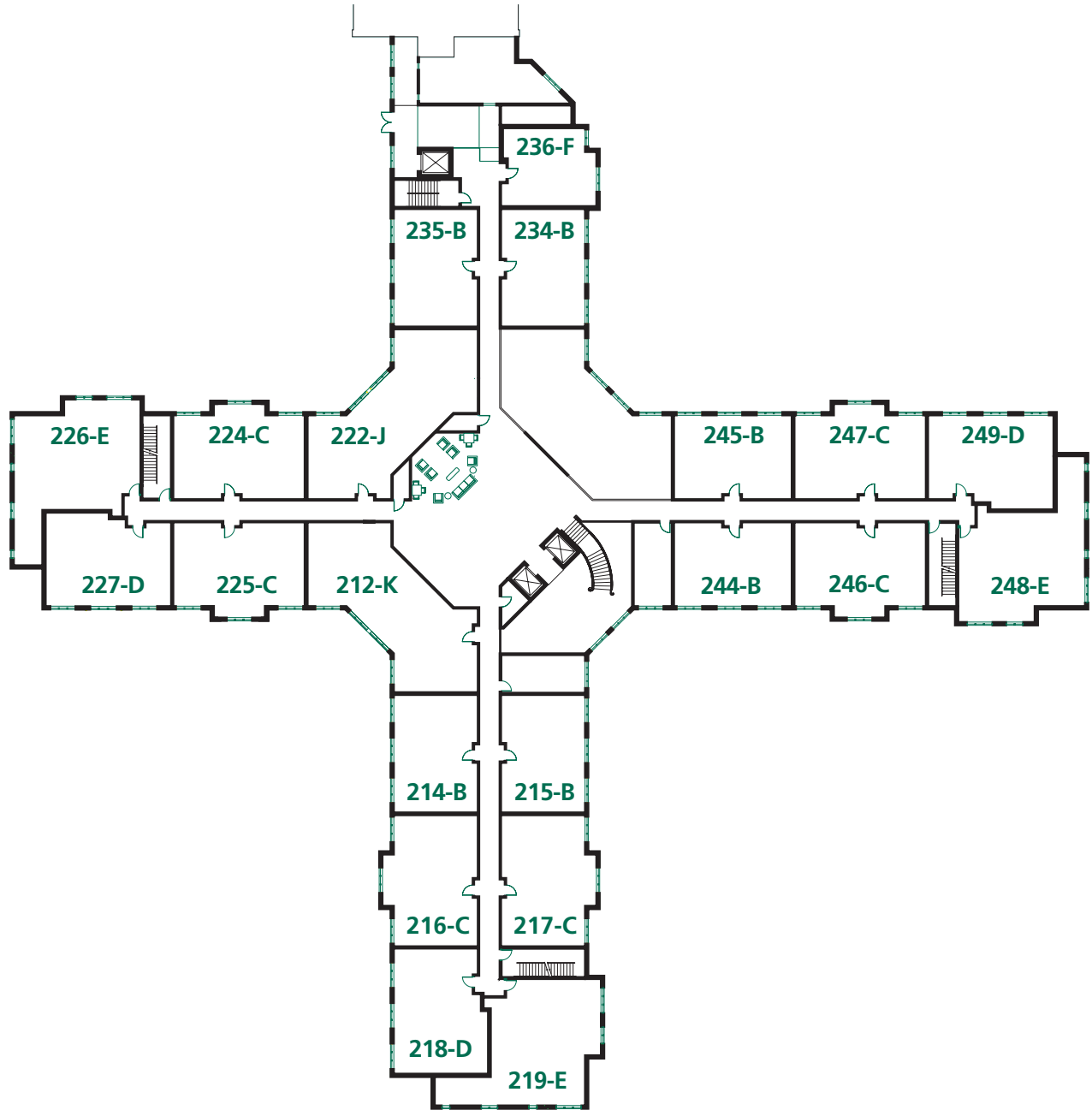
# THE MEADOWS APARTMENT HOMES

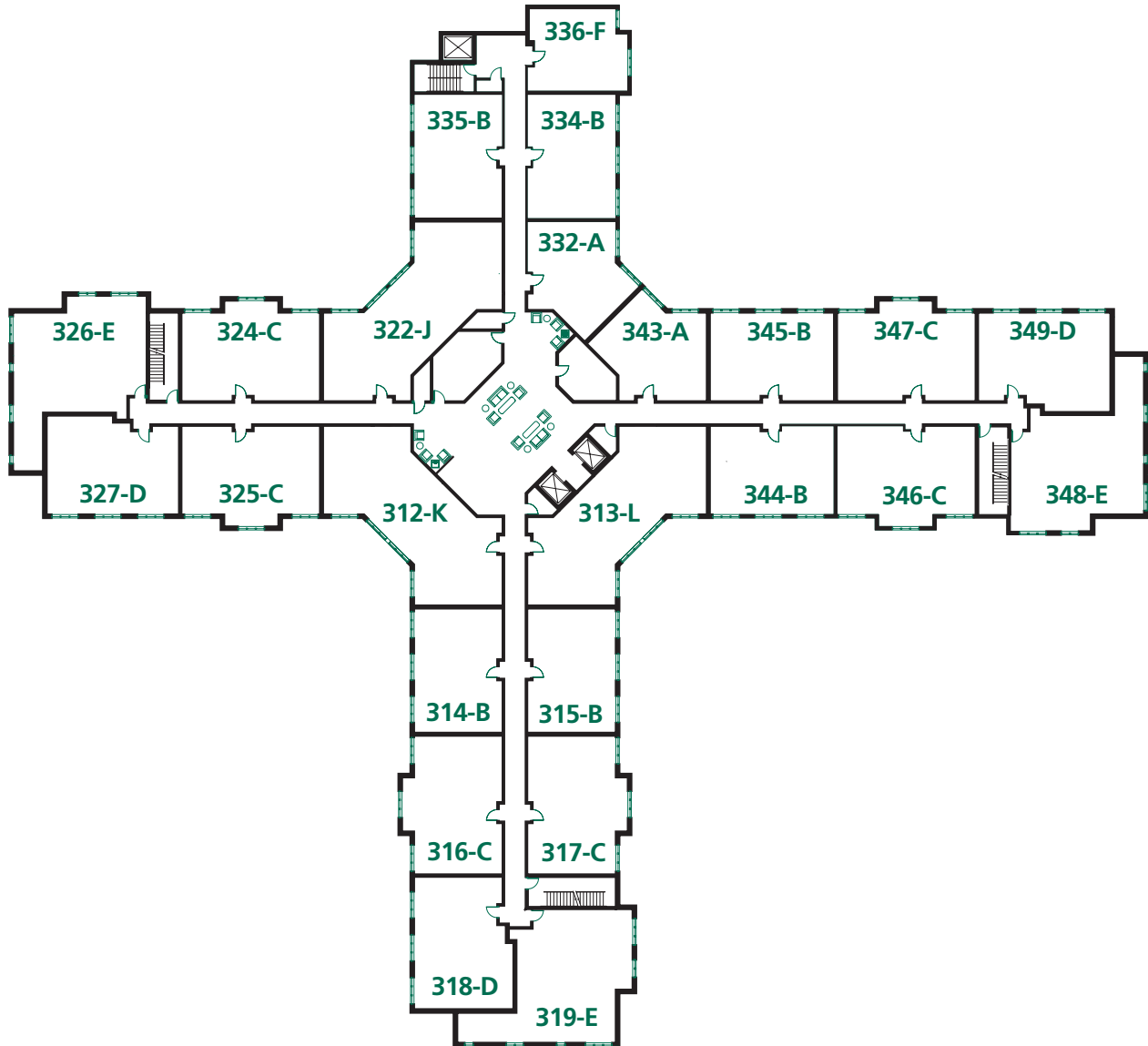


## The Evergreen

UNIT J, K, L  
Two Bedroom  
Two Bath  
Study







1200 EARHART ROAD, ANN ARBOR, MI 48105

Telephone 734.913.0730 | Facsimile 734.769.3092

[www.GlacierHills.org](http://www.GlacierHills.org)

